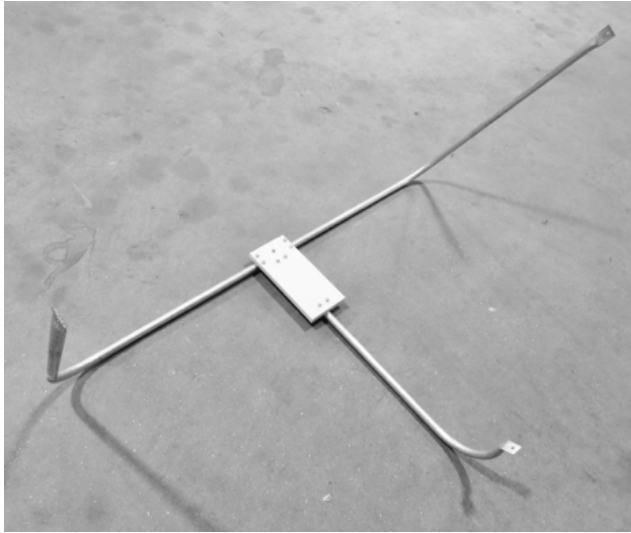
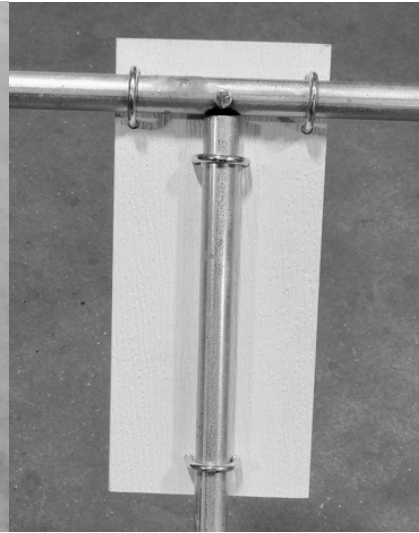


HOLLROCK ENGINEERING, INC.
Golf Range Equipment
Range Target Net

Step 1: Assemble the frame as shown in the photograph using the (6) U bolts and the (1) 2" bolt. When installing the single 2" bolt be sure to have the two rear hoop support legs leaning toward the front hoop support. Assemble with the plate above the tubing with the U bolts facing up as pictured.



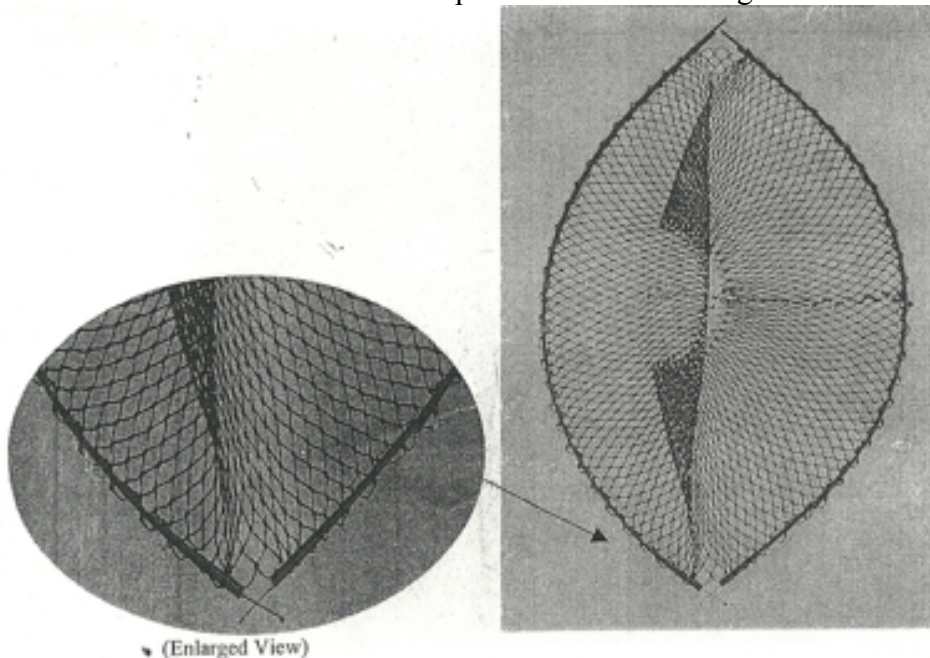
^Frame assembled^



^bottom side of base^

Step 2: Take (2) 4' flexible red catch hoops and make a longer 8' section using 2 bolts (1/4" x 3/4" hex bolt). Repeat with the remaining 2 red catch hoops.

Step 3: Take the net and lay it out flat on the ground. Thread one of the assembled 8' catch hoops along the perimeter of the net. Go halfway around the net and then stop. Repeat this procedure with the second assembled catch hoop around the remaining half net.



Step 4: Once both assembled catch hoops are threaded around equal portions of the net, line up the 2 holes from the end of both catch hoops and insert 2 bolts, tighten lightly. Repeat on the second side so all 4 bolts are lightly tighten and the hoop is round.

Step 5: Attach the assembled hoop to the outside of the two rear support legs using the upper bolts on each side of the hoop. Attach the lower front leg to the inside of the hoop as shown.



^Rear support leg attached to hoop^



^Front support leg attached to hoop^

Step 6: Snug all bolts and add sandbag(s) or other weight to the base as needed.

Enjoy your Target Net and remember to contact Hollrock Engineering for all your Range needs.

(413)586-2256

www.HollrockGolfRange.com