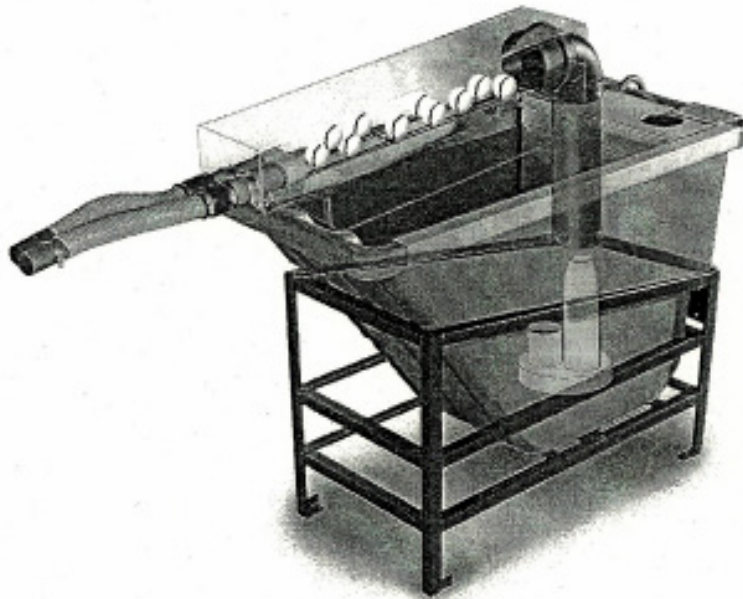


# HOLLROCK ENGINEERING

## Water Jet 3000



### Parts List

The Pre-Wash Soaker comes with the following parts packed in the tub.

Part Number	Description	Quantity
W09	Hydrant	1
W15C	Loading Grate Frame Legs, pair	1
W10	Ball Rails	1
K05	Drain Elbow, w/plug	1
W12	Exit Tube Assembly, complete	2
W12F	Exit Tube Clamps, Bolts & Nuts	2
W13	Washer Entrance Plate, with fingers	1
BL12	Hose Clamp	2
W11	Plexiglas Rail Cover (Separate carton)	1

*Prices Subject To Change Without Notice*

## Tools

You will need the following tools for assembly:

- 9/16" deep socket and ratchet
- 9/16" wrench
- Flat blade screwdriver
- Ruler or tape measure
- Utility knife or side cutter pliers

Electrical Requirement:

- 20 amp 110 volt grounded circuit

- Step 1. Remove loading grate and loading grate frame from top of pre-washer and set aside. The grate should be removed from the frame.
- Step 2. Remove grate frame legs, stainless steel ball rails and hydrant from tub and set aside.
- Step 3. Remove aluminum ball tray from tub. (Both pieces)
- Step 4. Remove pump from box and stand up on plastic stand in bottom of tub.
- Step 5. Determine which side of pre-washer you need the balls to come out of and place pump in that corner.
- Step 6. Install back half of ball tray, lining up nozzle on pump with small hole in shelf. (Fig 2) Be careful not to pinch power cord. It should be diagonal across edge of tub. (Fig 2)
- Step 7. If nozzle is too high or too low, loosen hose clamp on rubber coupler and adjust.
- Step 8. Install front half of ball shelf making sure tab on front shelf fits into slot on rear shelf.
- Step 9. Place hydrant into hole above the pump nozzle.
- Step 10. Slide stainless steel ball rails into holes located in the hydrant.
- Step 11. Slide exit tubes onto other end of ball rails.
- Step 12. Attach exit tubes to tub with clamps, bolts, nuts and washers provided using pre-drilled holes and tighten. (washers go on underside of tub)
- Step 13. Place Plexiglas cover over rails lining slots up with posts on side rail.
- Step 14. Attach grate frame to side opposite hydrant by inserting two threaded studs into pre-drilled holes in the tank side rails. Slide legs into mounting tubes on the grate frame, install 3/8" nuts and washers and tighten. (washers go on underside)
- Step 15. Place grate into the frame.
- Step 16. Thread drain elbow into bottom of tub. Use Teflon tape on thread to prevent leaking. Make sure cap is tight.
- Step 17. Fill tub with clean water to 4" from top of the tub.
- Step 18. Insert washer entrance plate into opening on top of washer, secure end of exit tubes to fingers on plate with hose clamps. See diagram for positioning of hoses into washer top.
- Step 19. Power cord may be plugged into outlet on washer so that both units start simultaneously, or you may wish to use a separate power source.
- Step 20. Dump a bucket of balls into pre-washer. Turn on power to washer and pre-washer to check operation.
- Step 21. If there are any problems, refer to troubleshooting guide.

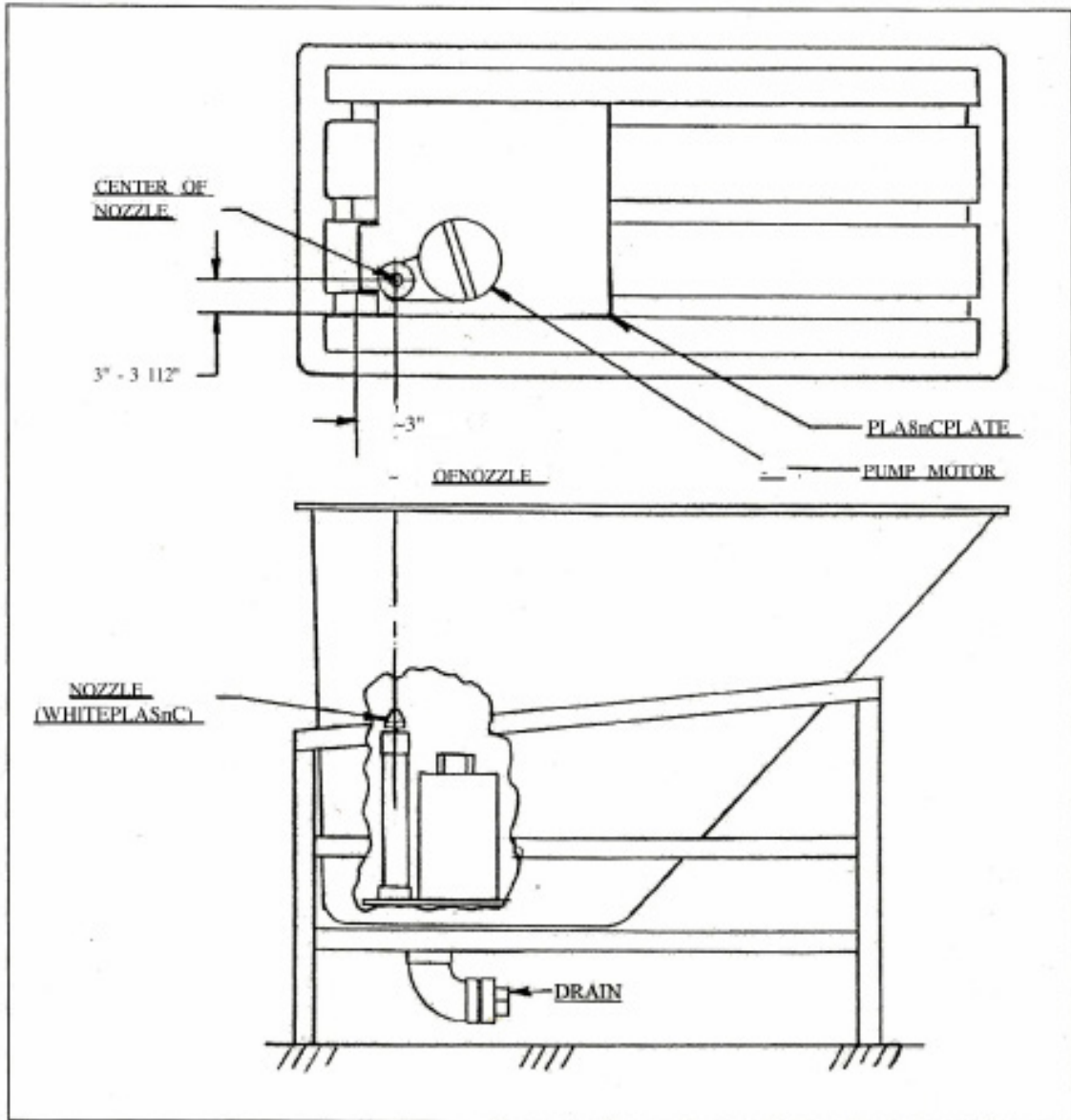


FIGURE 1

Prices Subject To Change Without Notice

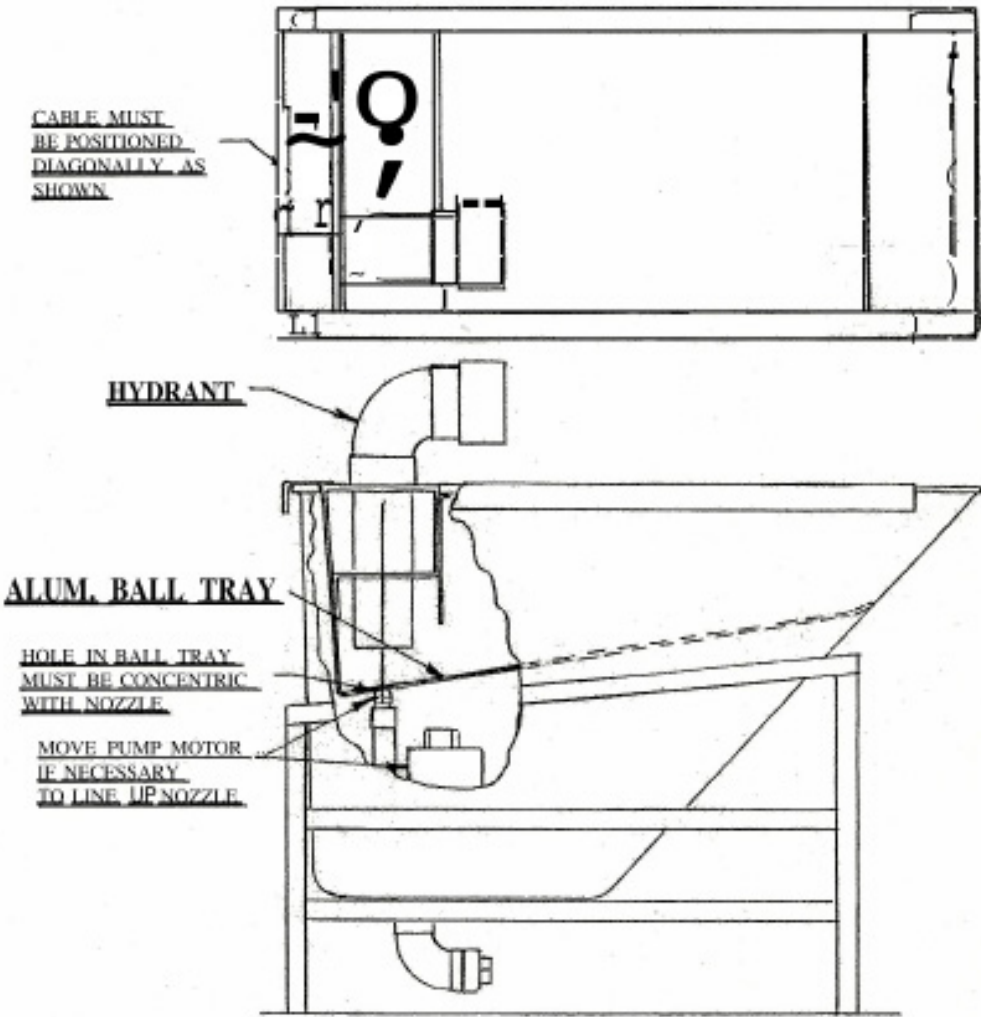


FIGURE 2

Prices Subject To Change Without Notice

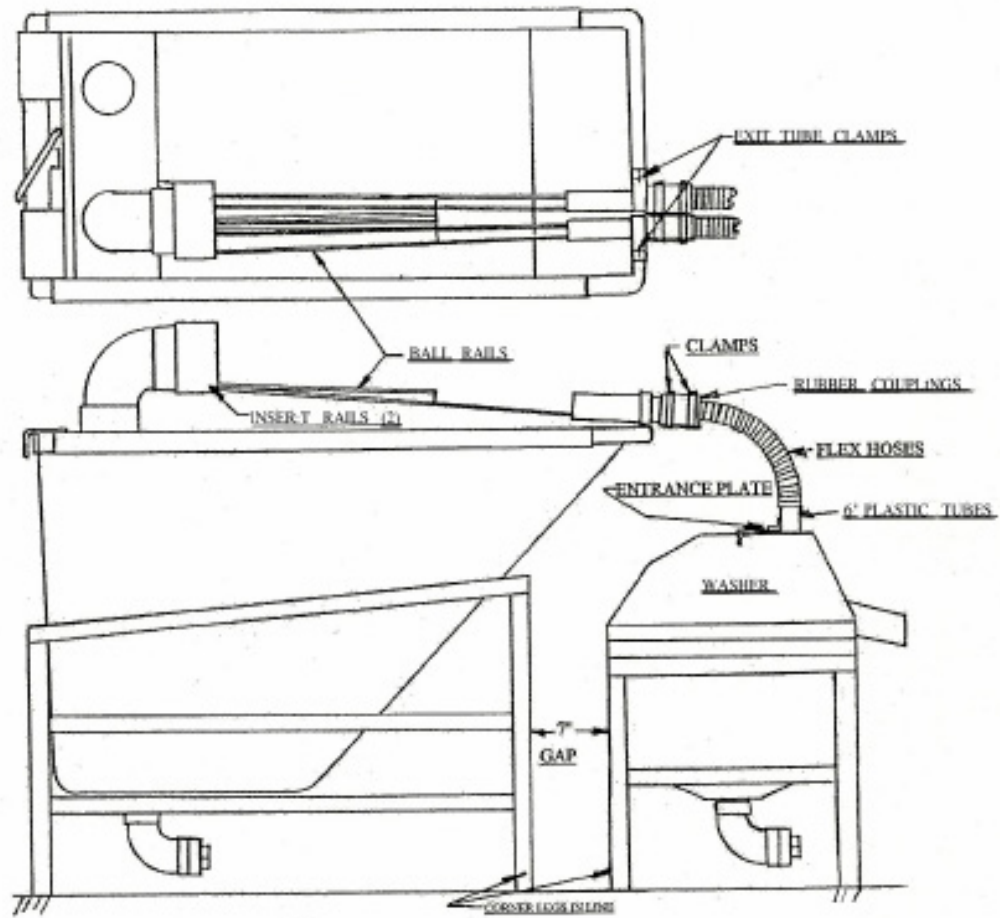


FIGURE 3

Prices Subject To Change Without Notice

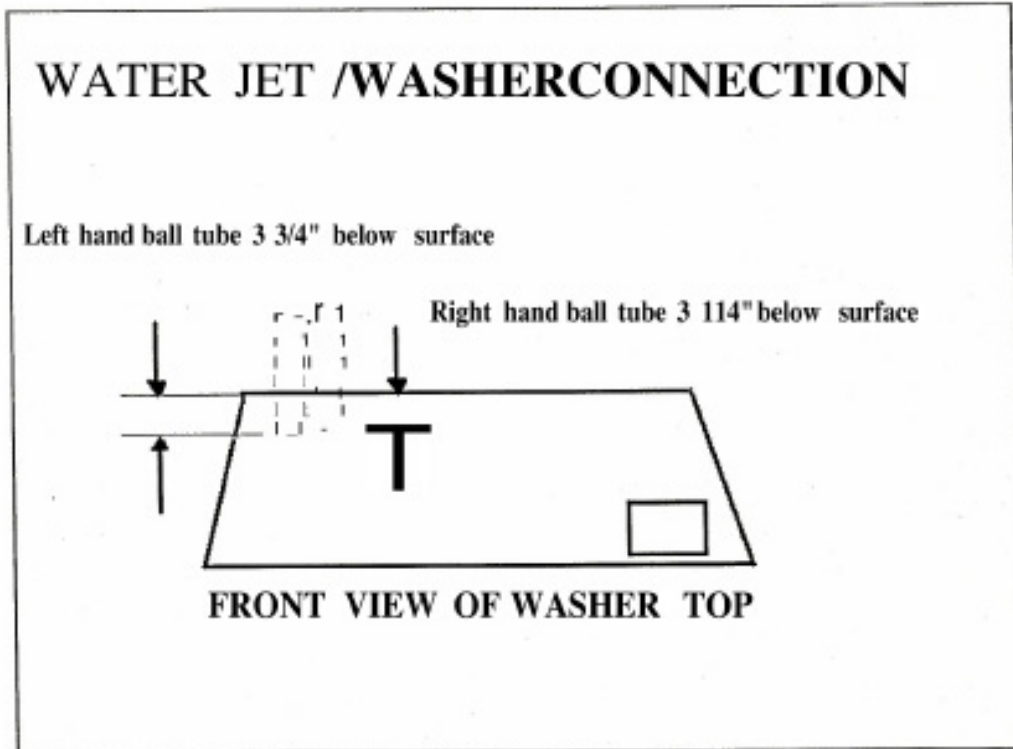


FIGURE 4

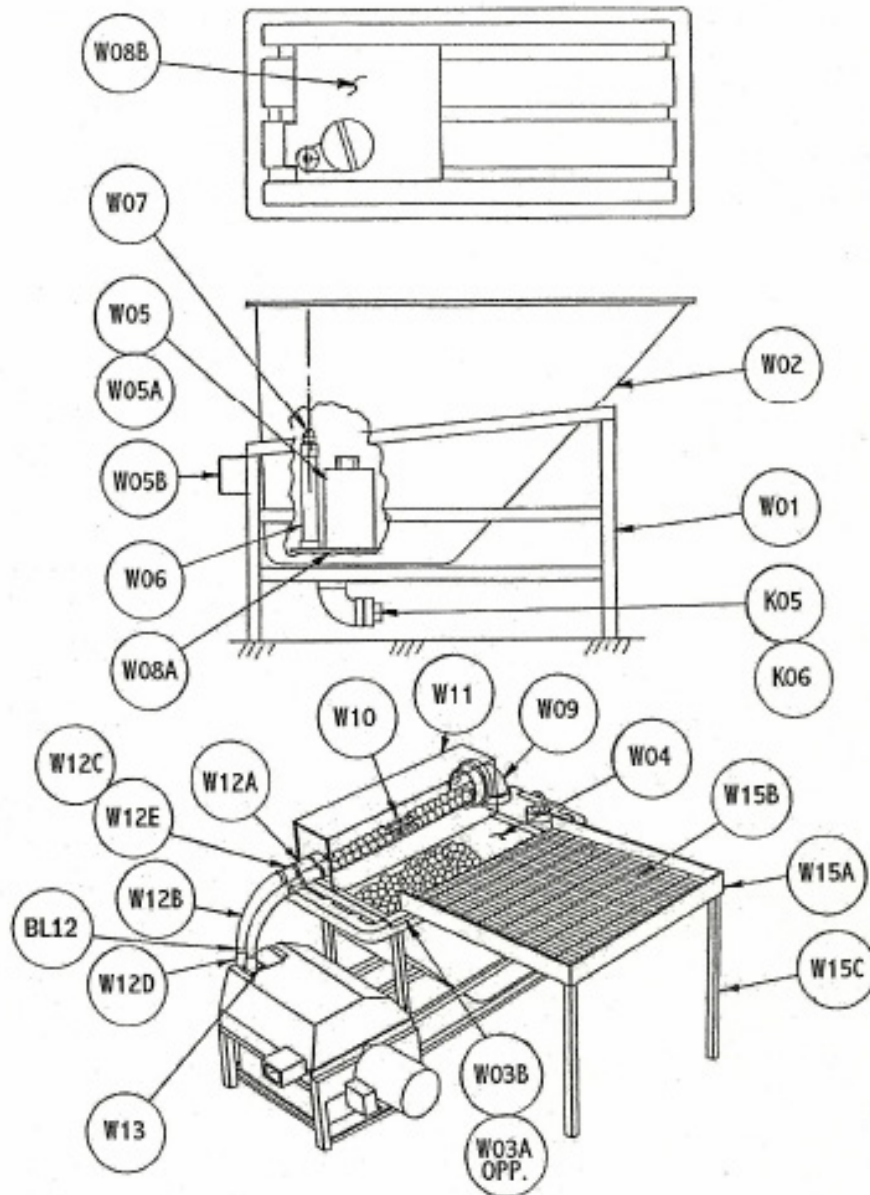
## Maintenance

Your Hollrock pre-washer should be cleaned daily.  
Inspect daily for worn or broken parts.  
For safe operation, replace broken parts immediately.

### Water Jet 3000 Troubleshooting

Problem	Reason	Solution
Balls backing up going in to washer	Exit tubes not properly installed	Refer to sheet for proper installation. This is a starting point. Tubes may need adjustment
Balls not feeding into hydrant	1. Pump impeller clogged 2. Hydrant to low	1. Disassemble and clean 2. Install a hose clamp around hydrant to raise it up
No water coming out of hydrant	1. Nozzle on pump not lined up 2. Water level low 3. Inside hose disconnected (external pump models) 4. Filter basket dirty (external pump models) 5. pump impeller clogged or dirty (external pump models) 6. Hydrant to low, allowing balls to clog	1. Make sure top of nozzle protrudes through hole in ball tray 2. Fill with clean water 3. Reconnect hose 4. Clean basket 5. Disassemble and clean 6. Install a hose clamp around hydrant to raise it up.
Pump not working	1. No power 2. Debris in pump inlet	1. Check for open circuit breaker, check for broken or loose wires. 2. Clear obstruction
Water leaking around drain elbow	1. Drain not tight 2. Fitting on tub bottom cracked	1. Put Teflon tape on threads and reinstall 2. Contact company
Water leaking from drain plug	1. Plug not tight 2. Gasket cracked or missing	1. Tighten plug 2. Install new gasket

Prices Subject To Change Without Notice



**Water Jet 3000 parts sketch**

*Prices Subject To Change Without Notice*